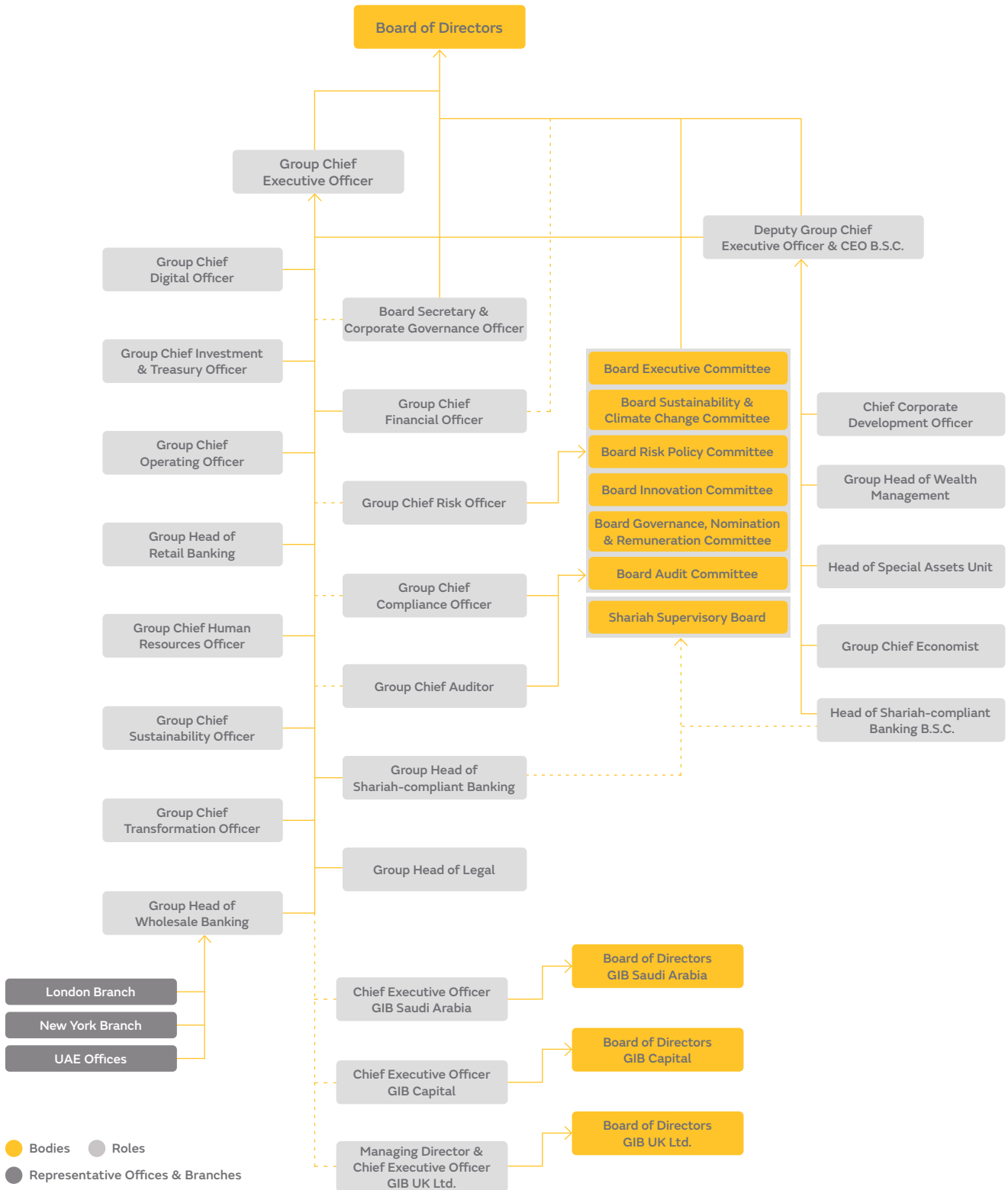
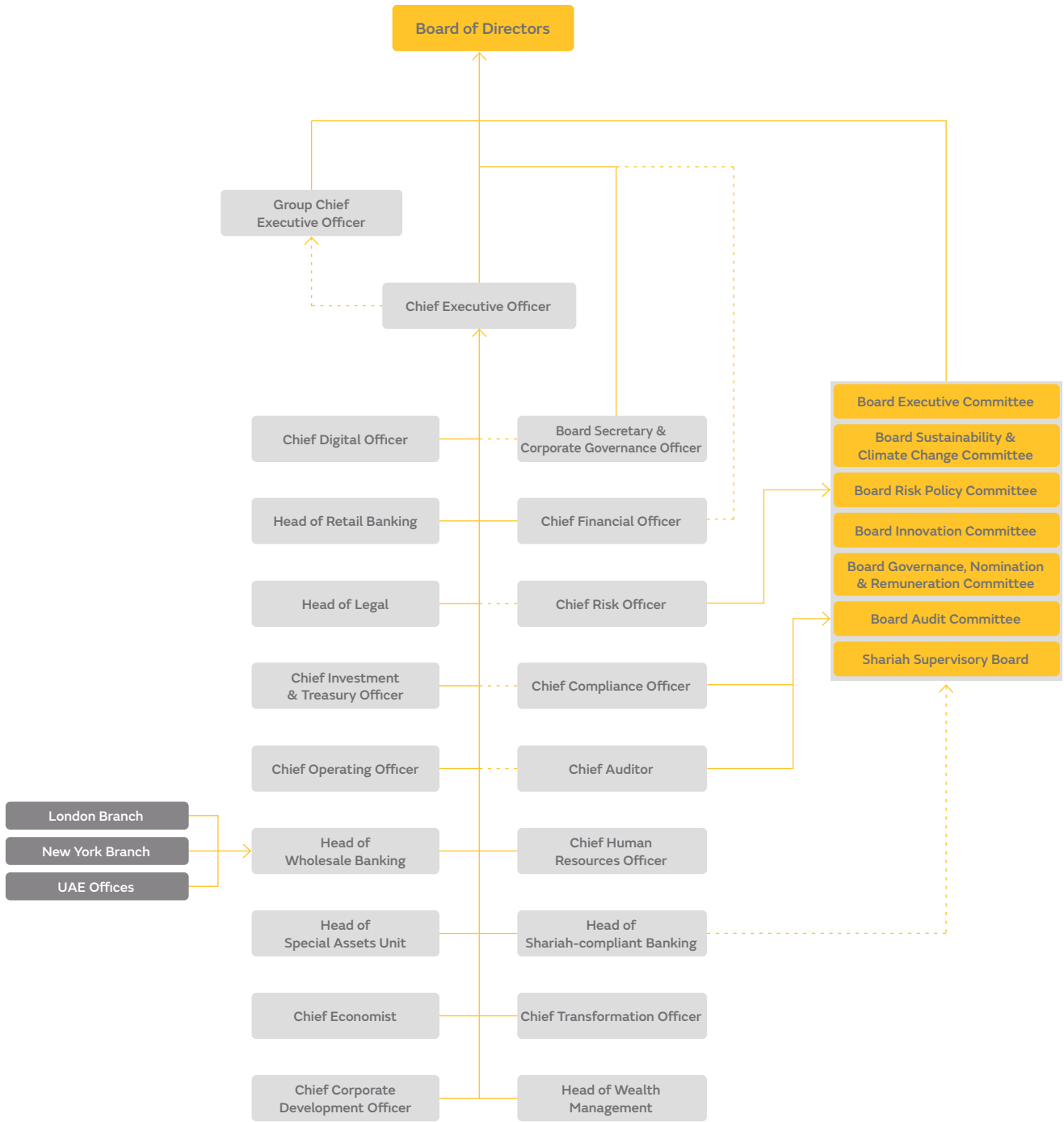


GIB Group organisation structure



Group Chief Executive Officer and Chief Executive Officer – GIB Saudi Arabia roles are held by the same incumbent Group Heads who ‘double hat’ as B.S.C. Heads also have a reporting line into the DGCEO & CEO B.S.C. Control Functions in branches (such as Compliance, Internal Audit, Risk Management, etc.) have a functional reporting to Group Heads

GIB B.S.C. organisation structure



● Bodies ● Roles ● Representative Offices & Branches

Group Heads who double hat as B.S.C. Heads have reporting lines to the Group CEO as well as the CEO B.S.C.